



EXCELLENT HYDRAULICS



About Us

Established in the year 2004, we, “Excellent Hydraulics”, are a renowned organization engaged in supplying, trading and exporting a premium quality range of Hydraulic Valves, Pumps, Hoses, Connectors and Filters & also Assembly Manufacturers for Hydraulic High & Low Pressure Hose Assemblies. We have a state-of-the-art infrastructure, sprawling across 5,000 sq.ft. with the latest machineries which enable us to assemble and deliver a flawless range of products.

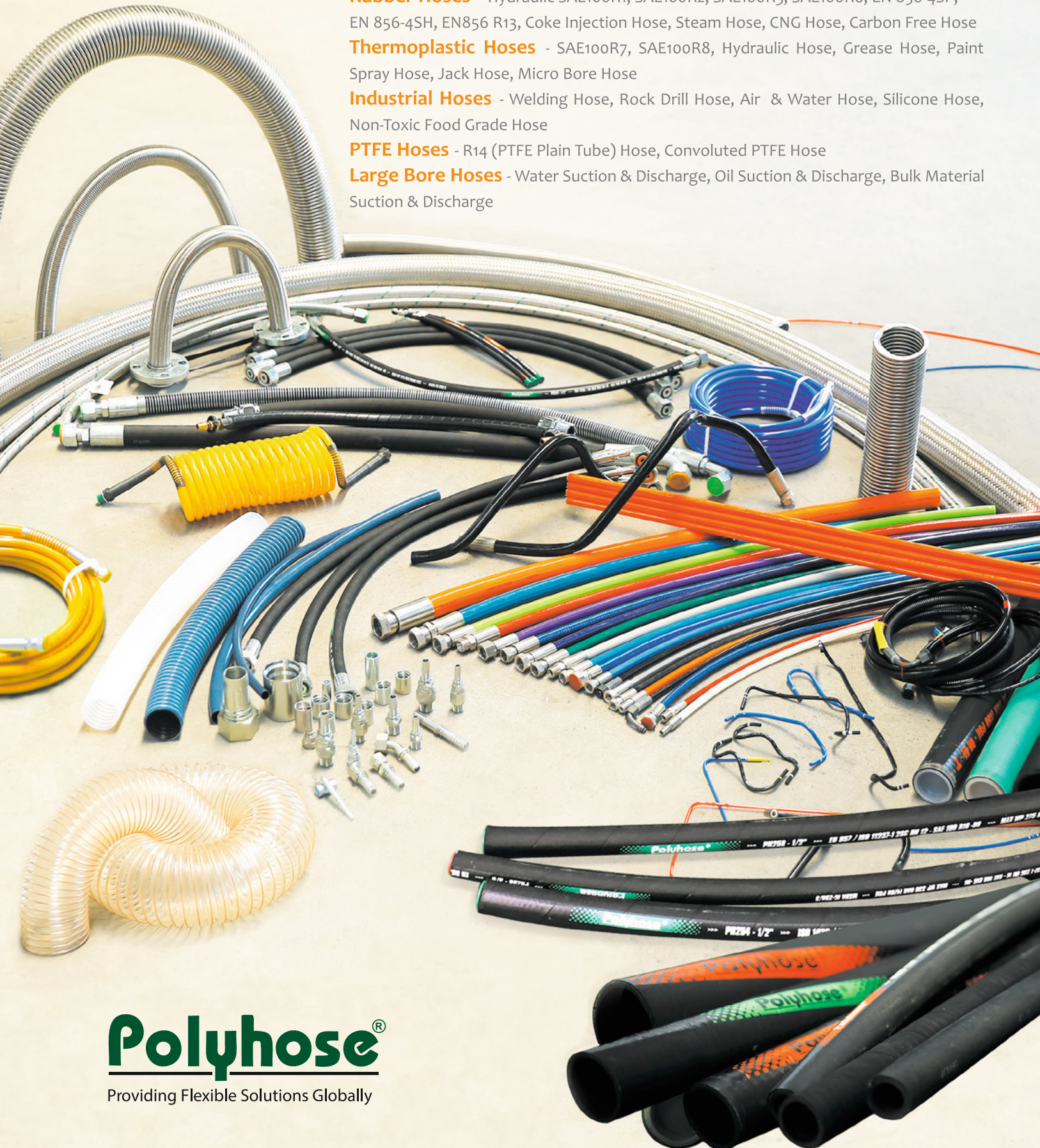
Authorised Distributors:

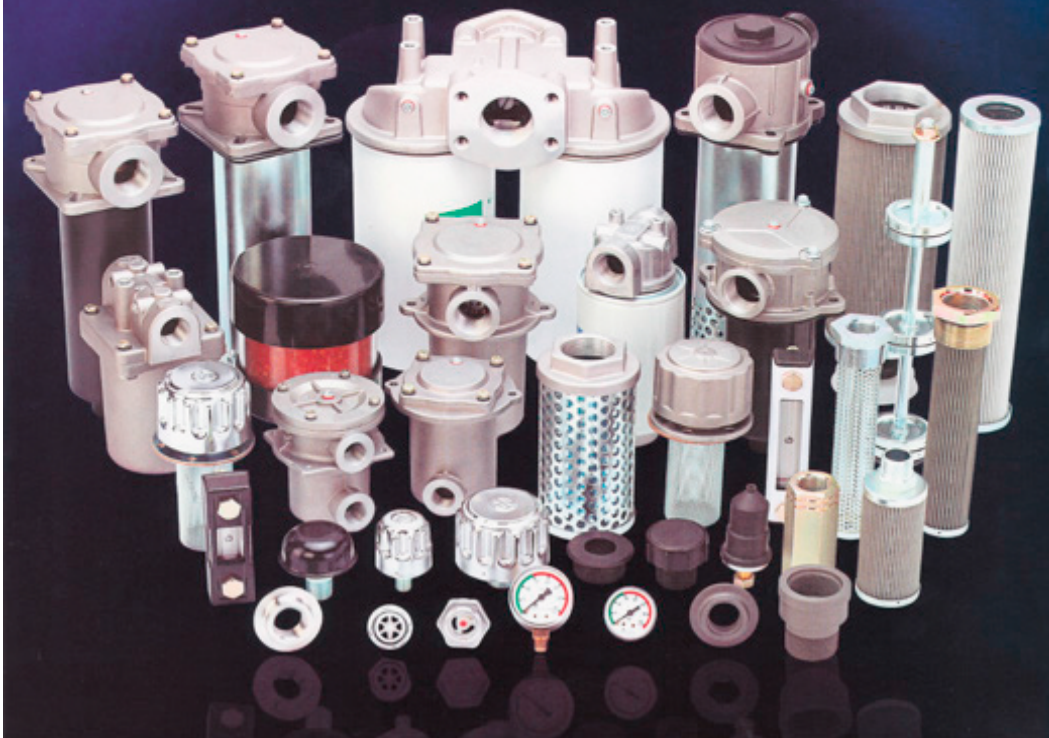


Stockists:



Rubber Hoses - Hydraulic SAE100R1, SAE100R2, SAE100R3, SAE100R6, EN 856-4SP, EN 856-4SH, EN856 R13, Coke Injection Hose, Steam Hose, CNG Hose, Carbon Free Hose
Thermoplastic Hoses - SAE100R7, SAE100R8, Hydraulic Hose, Grease Hose, Paint Spray Hose, Jack Hose, Micro Bore Hose
Industrial Hoses - Welding Hose, Rock Drill Hose, Air & Water Hose, Silicone Hose, Non-Toxic Food Grade Hose
PTFE Hoses - R14 (PTFE Plain Tube) Hose, Convoluted PTFE Hose
Large Bore Hoses - Water Suction & Discharge, Oil Suction & Discharge, Bulk Material Suction & Discharge





Filters

1. Inline Spin on Filters - IFR2, IFR3, IFR4
2. Tank Top Spin on Filter - TFR3
3. Tank Top Cartridge Filters - TIF2, TIFP, FIF, RPF, SPF, JFR1
4. Tank Top Heavy Duty Filter - CFR
5. Inline Heavy Duty - HFR

Level Gauges

1. Steel - LG2 (also available with temperature readings)
2. Aluminium - LG6 (also available with temperature readings)
3. Sight Glass Steel / Aluminium - SGA/S
4. Sight Glass Plastic - SGP

Strainers

1. Inline Steel Nut - SC2
2. Inline Aluminium Nut - SC3
3. Inline Plastic Nut - SE
4. Tank Mounted Aluminium Nut - TMA
5. Tank Mounted Mild Steel Nut - TMS

Breathers

1. Flange Type - FSB, ABF
2. Push on Type - PB
3. Weld Type - FSBW
4. Threaded Type - TB, ABT, ABP
5. Spin on Type - AB, AB2

Valves

1. Inline Check Valve - CUT
2. Lock Check Valve Single - SLVT
3. Lock Check Valve Double - DLVT

Accessories

1. Inline Diffuser - RD3
2. Magnetic Tank Cleaner - MT
3. Weld Flanges MS & SS - TWF
4. Grommet (Rubber Bushings) - GMT



Hand Pumps

Oil Tank Capacity 250 cc to 8.5 Ltrs, Working Pressure upto 1000 Bar

Radial Piston Pumps

Radial Piston Pump arrangements with 2, 3, 5 & 7 Pumping Elements, Capacity 1 lpm to 25 lpm, Working Pressure upto 550 Bar

Pressure Controls

1. Pressure Relief Valves
2. Pressure Reducing Valves
3. Pressure Control Valves
4. Pressure Sequence Valves
5. Pressure Control Modules
6. Counter Balance Valves

Flow Controls

1. Pressure Compensated Flow Control Valves
2. Flow Divider
3. Throttle Check Valves

Check Valves

1. Inline Check Valves
2. Check Valve - Screw in Cartridges
3. Pilot Optd. Check Valves
4. Shuttle Valves
5. Prefill Valves

Logic Cartridges

Direction Control Valves

1. Hand Lever Operated
2. Solenoid Operated
3. Hydraulically Operated



Tube Coupling Parts

1. Tube to Tube Couplings
2. Tube to Male Stud BSP
3. Tube to Male Stud Elastomeric BSP
4. Bulkhead Coupling
5. Swivel Coupling
6. Banjo Coupling
7. Gauge Adaptor
8. Plug BSP
9. Hose Adaptors



Flanges

1. Buttweld Flanges
2. Socketweld Flanges
3. Blind Flanges

Valves

1. Shutoff Valves
2. Needle Valves
3. Check Valves
4. Throttle Valves
5. Gauge Isolator Valves
6. Accumulator Safety Block
7. Quick Disconnect Coupling



Diagnostic

1. Diagnostic Coupling / Connector



Performance Data - Pressures quoted are relief valve maximum by-pass | Performance with SAE 20W oil at 50°C



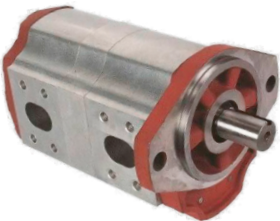
0P - P 3000 Series

PUMP TYPE	DISPLACEMENT	DELIVERY @1500 RPM & PRESSURE P		MAXIMUM CONTINUOUS PRESSURE P		SPEED AT MAXIMUM CONTINUOUS PRESSURE P	
	cc/rev	MIN lpm	MAX lpm	psi	bar	MAX	MIN
3003	1.27	1.0	1.9	3000	207	4000	700
3004	1.67	1.6	2.5	3000	207	4000	700
3006	2.2	2.3	3.3	3000	207	4000	700
3008	2.87	3.2	4.3	3000	207	4000	700
3011	3.8	4.5	5.7	3000	207	4000	700
3013	4.47	5.5	6.7	3000	207	4000	700
3015	5.13	6.4	7.7	3000	207	4000	700



1P - P 4000 Series

PUMP TYPE	DISPLACEMENT	DELIVERY @1500 RPM & PRESSURE P		MAXIMUM CONTINUOUS PRESSURE P		SPEED AT MAXIMUM CONTINUOUS PRESSURE P	
	cc/rev	MIN lpm	MAX lpm	psi	bar	MAX	MIN
4017	6.1	7.8	9.2	3000	207	3500	700
4020	7	8.9	10.5	3000	207	3500	700
4023	7.9	10.1	11.9	3000	207	3500	700
4027	9.2	11.8	13.8	3000	207	3500	700
4028	9.4	12.2	14.2	3000	207	3500	700
4032	10.6	14.1	16	3000	207	3500	700
4036	11.9	15.7	17.85	3000	207	3500	700
4040	13.1	17.3	19.7	3000	207	3500	700
4044	14.3	18.9	21.5	3000	207	3500	700
4052	16.8	22.9	25.2	3000	207	3500	700
4055	17.6	23.8	26.5	3000	207	3500	700
4060	19.2	26.5	28.8	3000	207	3500	700
4072	22.8	31.5	34.3	2525	174	3000	700
4090	28.13	38.8	42.2	2000	138	2400	700



2P - P 3000 Series

PUMP TYPE	DISPLACEMENT	DELIVERY @1500 RPM & PRESSURE P		MAXIMUM CONTINUOUS PRESSURE P		SPEED AT MAXIMUM CONTINUOUS PRESSURE P	
	cc/rev	MIN (lpm)	MAX (lpm)	psi	bar	MAX	MIN
3050	16.67	21.8	25	3000	207	3000	700
3070	22.73	30.7	34	3000	207	3000	700
3090	28.79	39.4	43.2	3000	207	3000	700
3105	33.34	45.8	50	3000	207	3000	700
3120	37.88	52.3	56.8	3000	207	3000	700
3146	45.46	63.8	68.2	2525	174	2500	700
3158	49.40	68.9	74.1	2525	174	2500	700
3220	68.8	96	103.2	2000	138	2500	700



3P - P 3000 Series

PUMP TYPE	DISPLACEMENT	DELIVERY @1500 RPM & PRESSURE P		MAXIMUM CONTINUOUS PRESSURE P		SPEED AT MAXIMUM CONTINUOUS PRESSURE P	
	cc/rev	MIN (lpm)	MAX (lpm)	psi	bar	MAX	MIN
3150	47.07	65.3	70.6	3000	207	2500	700
3180	56.17	78.2	84.2	3000	207	2500	700
3210	65.23	91.7	97.8	3000	207	2500	700
3250	77.15	109.0	115.7	3000	207	2500	700
3300	92.03	130.6	138.0	2525	174	2500	700
3330	101.71	144	152.6	2300	159	2500	700
3380	116.78	166.1	175.2	2000	138	2500	700
3500	153.66	217.9	230.5	1500	100	2500	700



HYDAX

GEAR COUPLINGS



walvoil

Applications - Agricultural Machineries, Industrial Vehicles, Construction and Mining Equipment, Truck Cranes, Construction Machineries and Forklifts

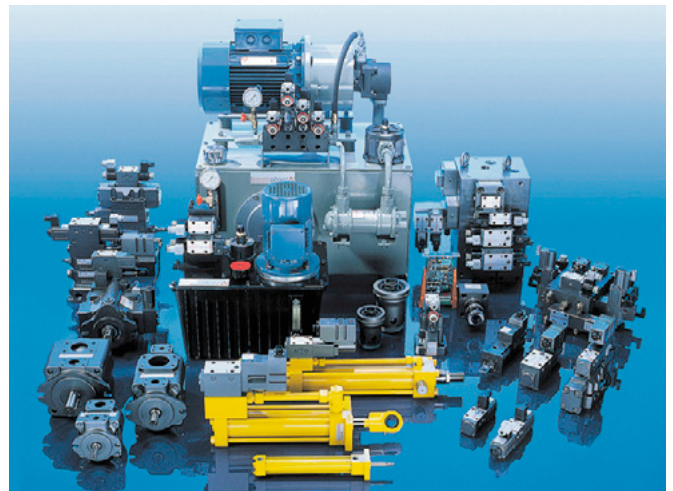


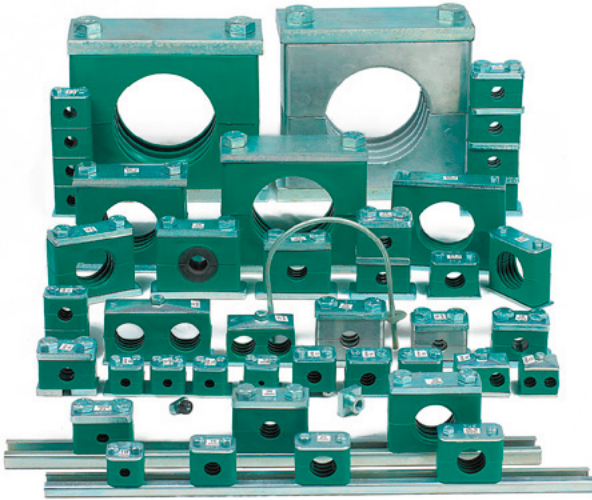
atos®

ELECTROHYDRAULIC COMPONENTS

Atos is a leading manufacturer of Components & Systems in Electrohydraulics: the advanced technology that integrates hydraulics with electronics to improve the performances of modern machinery

- Hydraulic Pumps
- Pressure – Flow & Check Valves
- Modular Valves
- On-Off Directional Controls
- Proportional Valves
- Cartridge Valves





CLAMPS

Available in PP - Polypropylene

PA - Polyamide

AL - Aluminium

Comes in Single / Twin (Horizontal & Vertical)



INDUSTRIAL GAUGES

Our Industrial Gauges are available in dial sizes of 63 mm and 100 mm with either Stainless Steel or Brass wetted parts and cover ranges from vacuum upto 1600 bar. Accuracy ranges from 1.6% to 1.0% F.S.

INDUSTRIAL TRANSMITTERS

Our Industrial Pressure Transmitter and submersible level transmitters available with accuracy from 0.5% to 0.1%. Ranges vary from 100mbar upto 1000 bar including Gauge, Vacuum, Compound & Absolute Ranges. Output options include Current or Voltage Output Signals.



ACCUMULATORS

High Pressure Bladder Accumulators, Diaphragm Accumulators, Piston Accumulators, Silicone Accumulators, Stainless Steel Accumulators, Hydracushions, Pulsation Dampers

COOLERS

Air, Oil, Water Coolers, Heat Exchangers, Plate Heat Exchangers, Air Blast Coolers, Oil Filters, Screw Pumps, Water Valves



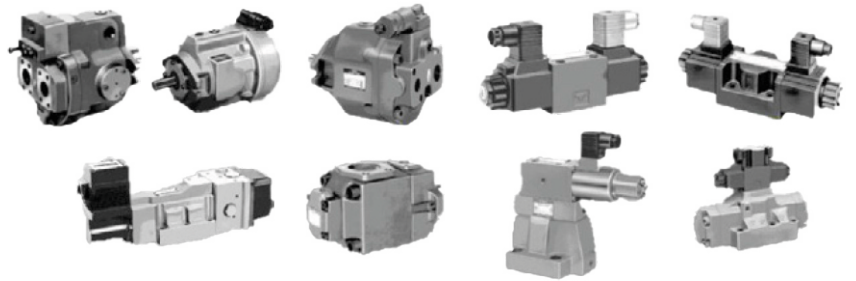
YUKEN

Pumps

Piston Pump, Vane Pump, Gear Pumps

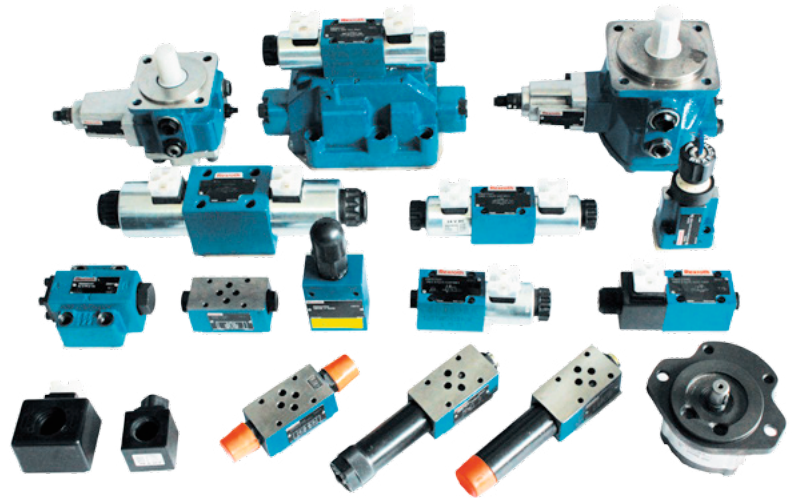
Valves

Pressure Control Valves, Modular Valves, Flow Control Valves, Directional Control Valves, Proportional Valves



Rexroth Bosch Group

Pumps - Gear Pump, Vane Pump, Axial Piston Pump
Directional Control Valves
Proportional / Servo Valves
Flow Control Valves
Pressure Valves



VELJAN

Vane Pumps, Axial Piston Pumps, Vane Motors, Pressure Control Valves, Flow Control Valves, Check Valves, Directional Control Valves, Hydraulic Cylinders and Pneumatics



Faster



NV
Standard couplings with poppet valve (WP upto 350 Bar)



FFH
Flat face couplings, ISO 16028 interchange, 350 Bar series.



VVS
Screw to connect couplings for high pressure applications (WP upto 800 Bar)



PVVM
Screw to connect couplings for high pressure, ISO 14540 interchange, poppet valve (WP upto 1000 Bar)



Hydraulic Motors & Steering Units



POWER PACKS



EXCELLENT
HYDRAULICS

www.excellenthydraulics.in

Head Office :
PAP J 134, MIDC Bhosari
Near Quality Circle, Behind Smith House
Pune 411026, MH, India
M : +91 8411884475
sales@excellenthydraulics.in