

Double Locking Check Valve

These Check Valves are flow in one direction and pressure flow in reverse direction, until operated by pilot operated pressure to allow reverse flow. The specific cracking pressure required to open the valve to allow free flow direction.



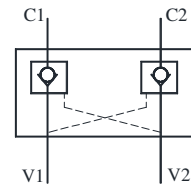
Specifications

Model Number	Max. Flow L/min.	Max. Operating Pressure Kgf/cm ²	Min. Required Pilot Pressure Kgf/cm ²	Mass Kg
DLCV-03B-10	30	160	22~28	1.05

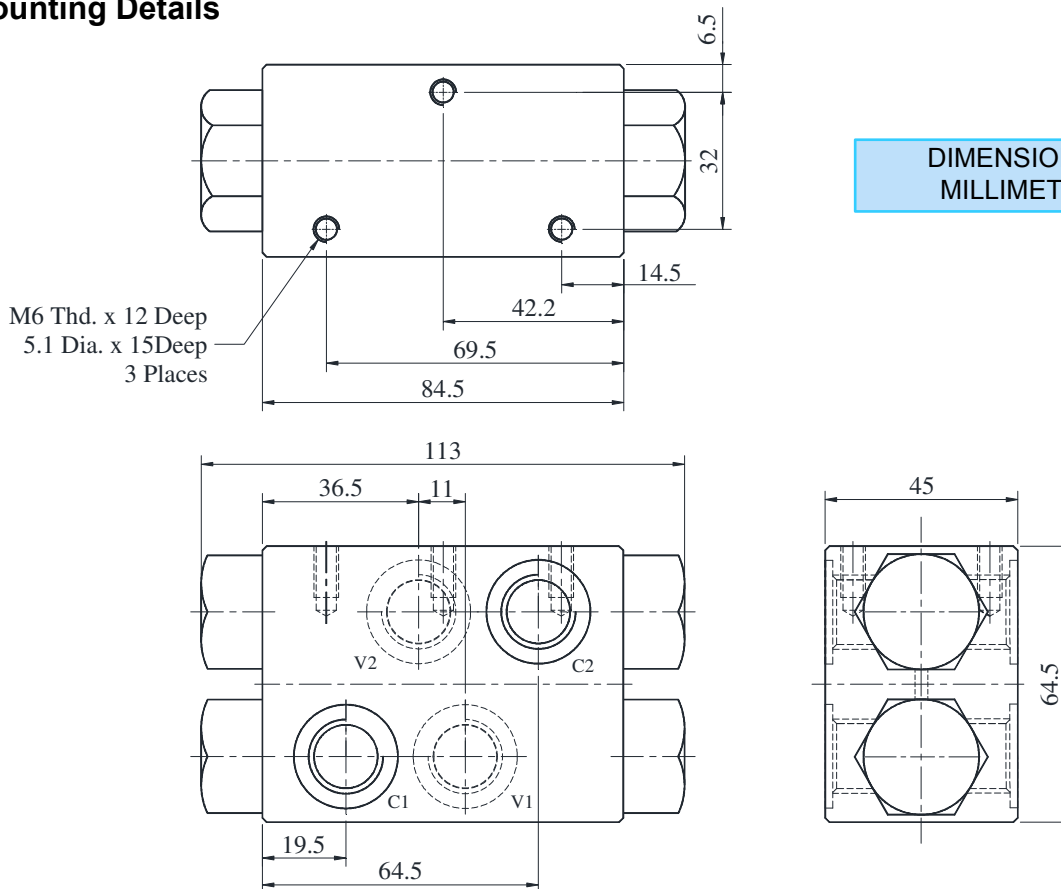
Model Number Designation

DLCV	-03	B	-10
Series Number	Port Size	Port Thread	Design Number
Double Locking Check Valve	03 - 3/8"	B - BSPP (STD.)	10

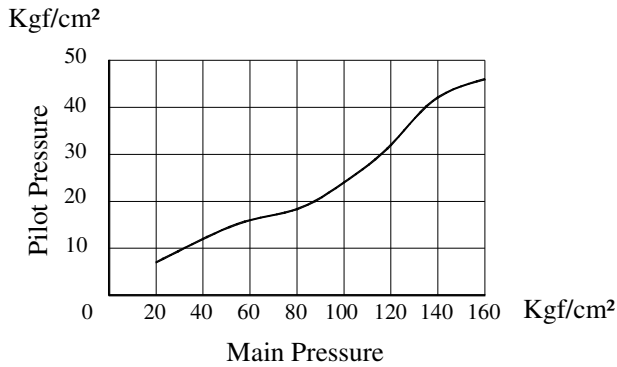
Graphic Symbol



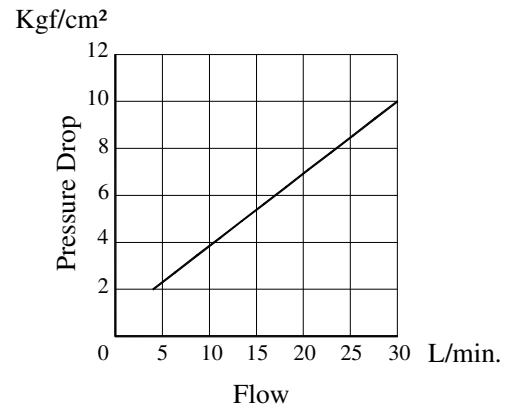
Mounting Details



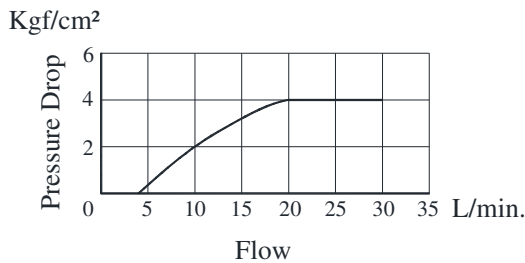
Minimum Pilot Pressure Characteristics Curve



Pressure Drop vs. Free Flow



Pressure Drop vs. Reverse Free Flow



Spare Parts List

List of Seals

Sl.No.	Name of Parts	Part Numbers	Qty.
1	O-Ring	SO-NB-P18	4

Note: When ordering the seals, please specify the Seal Kit number from the table below.

List of Seal kits

Model Numbers	Seal Kit Numbers
DLCV-03B-10	KS-DLCV-03-10

Hydraulic Fluids

Cleanliness

Contamination level should be within NAS class 10. Use of 100µm (150 mesh) tank filter on suction side, above 50mm away from the tank bottom.